



DRY FLOOR FRICTION SLIP RESISTANCE TEST

Evolution Hardwax Oil applied to engineered timber flooring.

Prepared for: Giles Whittle Herbert
 Whittle Waxes
 13 / 25 Quanda Road
 COOLUM BEACH QLD 4573

Specimen Description: Evolution Hardwax Oil applied to engineered timber flooring.
 320x750 mm.

No. of Specimens: 1 off (Sampling conducted by client).

Specimen Preparation: Washed with water and pH neutral detergent, rinsed then dried.

Test Condition & Slope: Unfixed. 0°

Test Direction: Test conducted parallel with grain of timber.

Air Temperature: 23°C

Test Standard: AS 4586:2013 Slip resistance classification of new pedestrian surface materials, Appendix B – Dry Floor Friction Test.

Test Location: ATTAR, Unit 1, 64 Bridge Road, Keysborough, VIC.

Test Date: 30 May 2017

Test Equipment: Tortus Floor Friction Tester Mk II, Serial Number 183.

Slider Rubber: Slider 96 Batch #70 prepared on P400.

Test Personnel: Marcus Braché

| | | |
|---------------------------------------|-------------|----------|
| Run: | 1 | 2 |
| Coefficient of Friction (COF): | 0.59 | 0.64 |
| Mean COF (rounded to 0.05): | 0.60 | |
| Classification: | D1 | |

These results apply only to the specimens tested and it is recommended that before selection of flooring or paving materials the effect of service conditions, including maintenance procedures and wear on their slip-resistance be checked.

Reviewed by:



Marcus Braché
 Senior Engineering Technician
 Approved Signatory



Daniel King BSc/BEng (mat) Hons., MIEAust
 Materials & Testing Engineer
 Approved Signatory

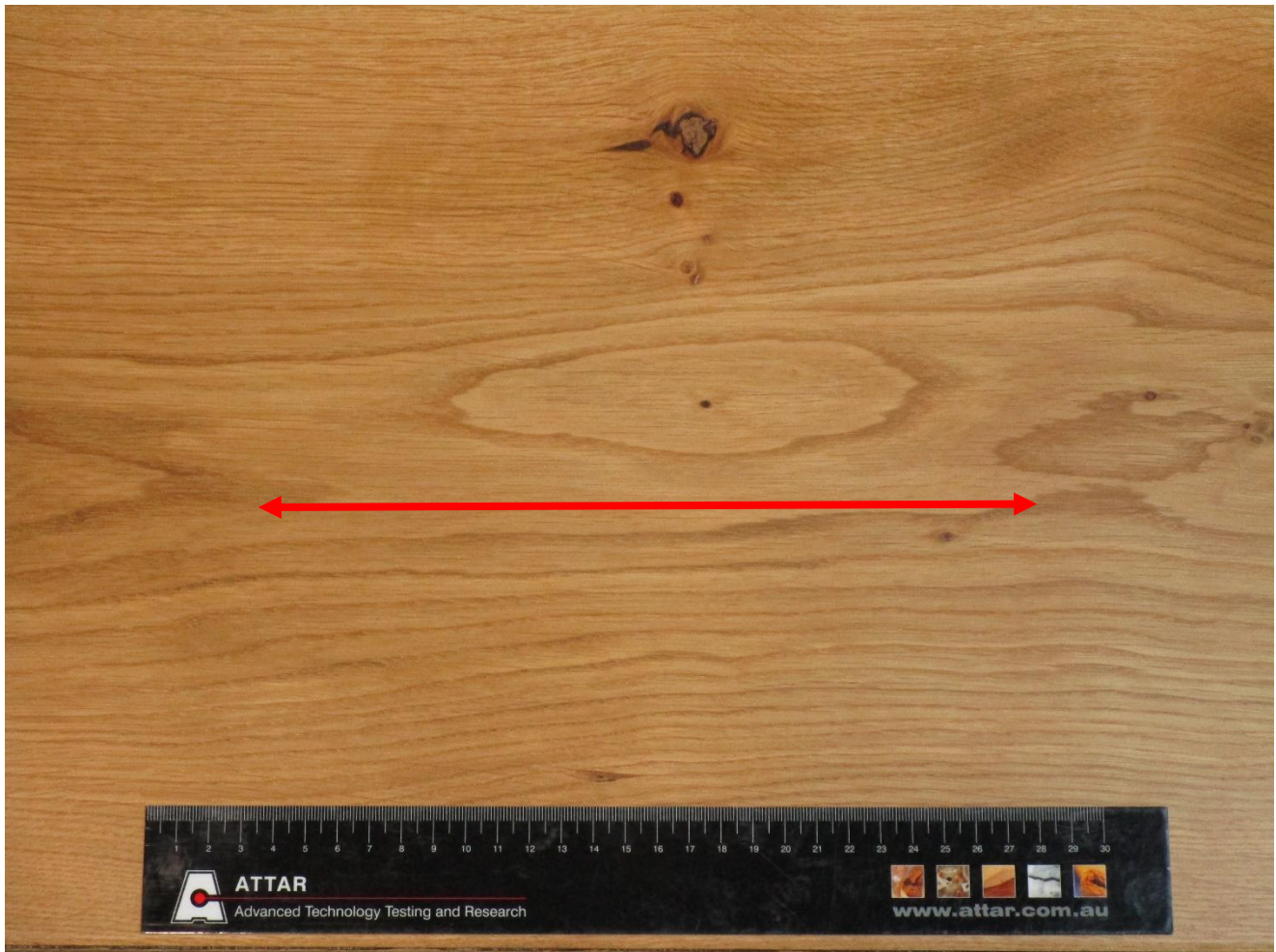


Figure 1: Evolution Hardwax Oil applied to engineered timber flooring.

CLASSIFICATION CRITERIA – AS 4586 - 2013
Dry Floor Friction Test - Appendix B

Slip resistance

The 'dry floor friction' test method in Appendix B is not suitable for heavily profiled surfaces or carpets.

Compliance

The surface shall comply with the stated classification for the test method that is nominated and declared by the manufacturer or supplier.

**TABLE 3: CLASSIFICATION OF PEDESTRIAN SURFACE MATERIALS
 ACCORDING TO THE AS 4586 DRY FLOOR FRICTION TEST**

| Classification | Floor friction tester mean value |
|----------------|----------------------------------|
| D1 | ≥0.40 |
| D0 | <0.40 |

Means of demonstrating compliance

Pedestrian surfaces that are classified in accordance with Table 3 where appropriate, shall meet the following criteria:

- (a) The mean test results shall be as follows:
 - (i) For Classification D1 in Table 3—
 - (A) the mean of the test results shall be equal to or greater than 0.4; and
 - (B) each individual slope corrected result shall be equal to or greater than 0.35.

If either of these criteria is not met, the lot shall be considered to be Classification D0.
- (b) The classification in accordance with Table 3 shall be determined by—
 - (i) selecting and testing specimens at random as specified in Appendix B of AS4586; or
 - (ii) carrying out continuous testing and process control in accordance with AS 3942.
- (c) When testing individual lots, if a particular test fails to produce the expected classification it shall be permissible to—
 - (i) disregard the first sample, resample a minimum of 10 specimens from the whole lot, retest and apply the criteria to the new sample; or
 - (ii) subdivide the lot into smaller lots of different quality, resample, retest and reclassify each of the smaller lots.